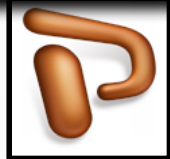
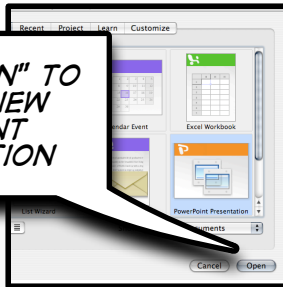


# PowerPoint Tutorial

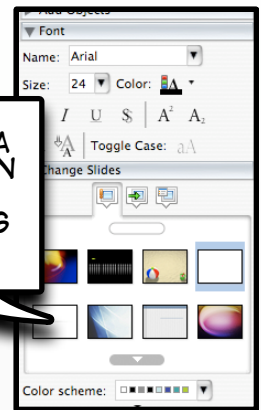
1. LAUNCH POWERPOINT



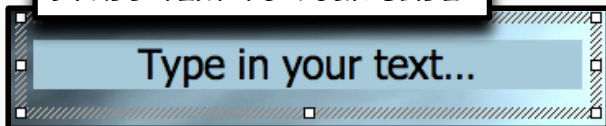
CLICK "OPEN" TO  
CREATE A NEW  
POWERPOINT  
PRESENTATION



2. CHOOSE A  
SLIDE DESIGN  
FROM THE  
FORMATTING  
PALETTE



3. ADD TEXT TO YOUR SLIDE

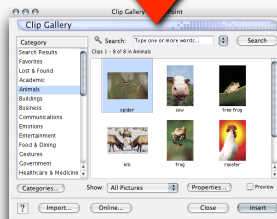


CLICK AND DRAG THE TEXT BOX AROUND

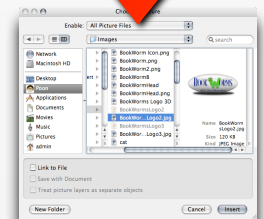


4. USING THE FORMATTING PALETTE,  
ADD PICTURES TO YOUR SLIDE...

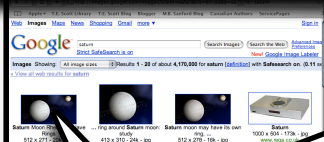
...FROM THE  
CLIP ART  
GALLERY



...OR FROM  
YOUR  
COMPUTER

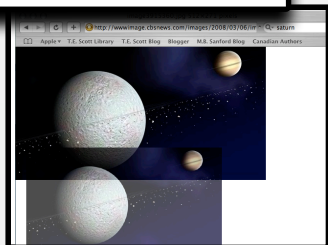


YOU CAN ALSO DRAG AND DROP  
PICTURES FROM THE INTERNET

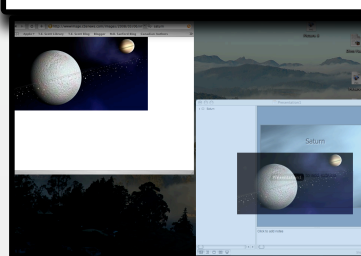


A. LAUNCH SAFARI  
AND FIND AN  
IMAGE...

B. PRESS AND  
HOLD THE MOUSE  
BUTTON TO PICK  
UP THE IMAGE...



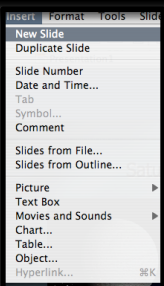
C. PRESS "F9" TO SEE  
ALL OF YOUR  
WINDOWS. HOLD THE  
IMAGE OVER THE  
POWERPOINT  
WINDOW. WAIT UNTIL  
THE POWERPOINT  
WINDOW ZOOMS TO  
THE FRONT...



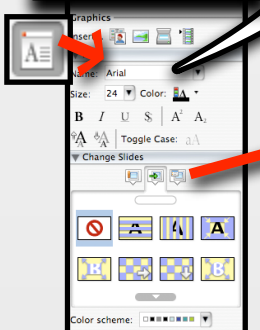
D. DROP THE  
IMAGE INTO  
YOUR SLIDE BY  
LETTING GO  
OF THE MOUSE  
BUTTON



5. CREATE A  
NEW SLIDE  
AND REPEAT  
STEPS 3-4

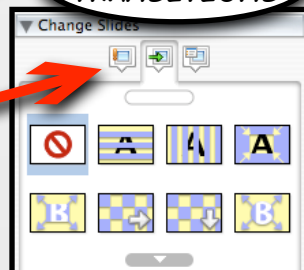


6. USE THE  
FORMATTING  
PALETTE TO  
FINE-TUNE  
YOUR SLIDE  
SHOW...

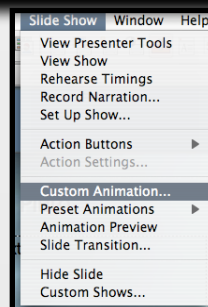


...CHANGE  
THE FONT...

...OR ADD  
TRANSITIONS



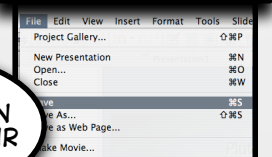
7. YOU CAN ALSO  
ADD ANIMATION  
UNDER THE "SLIDE  
SHOW" MENU



CLICK ON  
THIS BUTTON  
TO VIEW YOUR  
SHOW



8. SAVE YOUR  
PROJECT



USE THE ← AND → ARROWS  
TO CONTROL THE SHOW.  
PRESS "ESC" TO EXIT.